



5 Lavery Court, Corby, NN18 0SA

Offers in excess of £170,000

Stuart Charles are delighted to offer FOR SALE this TWO DOUBLE bedroom home located in the Town centre of Corby. Situated a short walk away from multiple shops and several schools an early viewing is recommended to avoid missing out on this home. The accommodation comprises of an entrance hall, lounge, and kitchen/diner. To the first floor are two double bedrooms and a three piece family bathroom. Outside to the front is a driveway for two cars, while to the rear the south facing garden features a low maintenance patio leads up onto an artificial laid lawn, there is also a brick built shed for convenience. Call now to view!!.

- DRIVE-WAY
- TWO DOUBLE BEDROOMS
- CLOSE TO THE TOWN CENTRE
- MODERN COMBI BOILER
- WELL PRESENTED THROUGHOUT
- SUN TRAP GARDEN
- CLOSE TO LOCAL AMENITIES

Entrance Hall

Entered via a double glazed door, stairs rising to first floor landing, door to:

Lounge

13'7 x 10'7 (4.14m x 3.23m)

Double glazed window to front elevation, radiator, tv point, telephone point, archway to:

Kitchen/Diner

16'1 x 8'9 (4.90m x 2.67m)

Landing

Bedroom One

13'11 x 9'6 (4.24m x 2.90m)

Bedroom Two

10'4 x 10 (3.15m x 3.05m)

Bathroom

6'4 x 5'6 (1.93m x 1.68m)

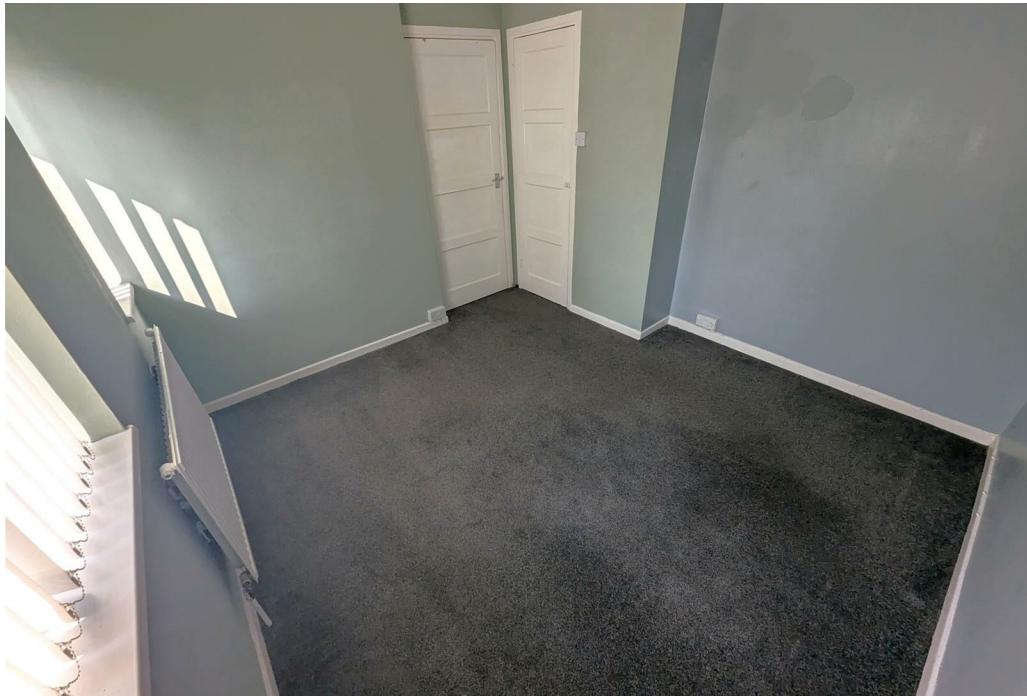
Outside





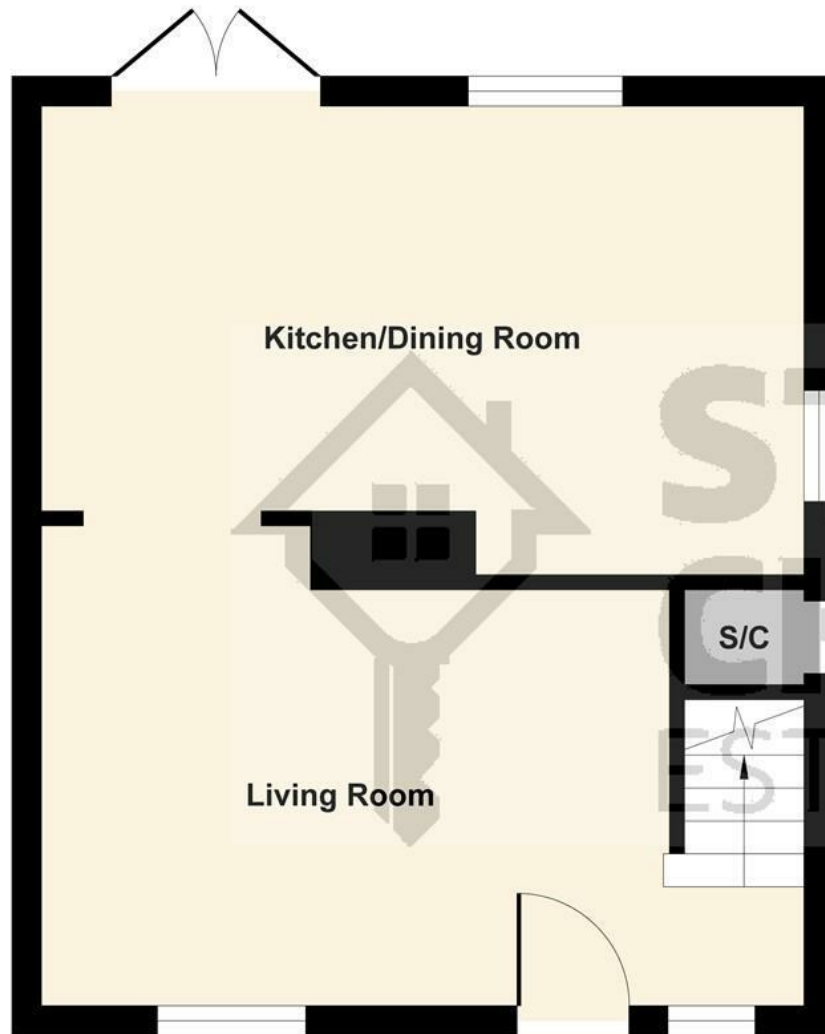












Ground Floor



First Floor

Illustration for identification purposes only, measurements are approximate, not to scale.
Produced by Elements Property

Energy Efficiency Rating		
	Current	Potential
Very energy efficient - lower running costs		
92 plus A		
81-91 B		
69-80 C		
55-68 D		
39-54 E		
21-38 F		
1-10 G		
Not energy efficient - higher running costs		
England & Wales		EU Directive 2002/91/EC 